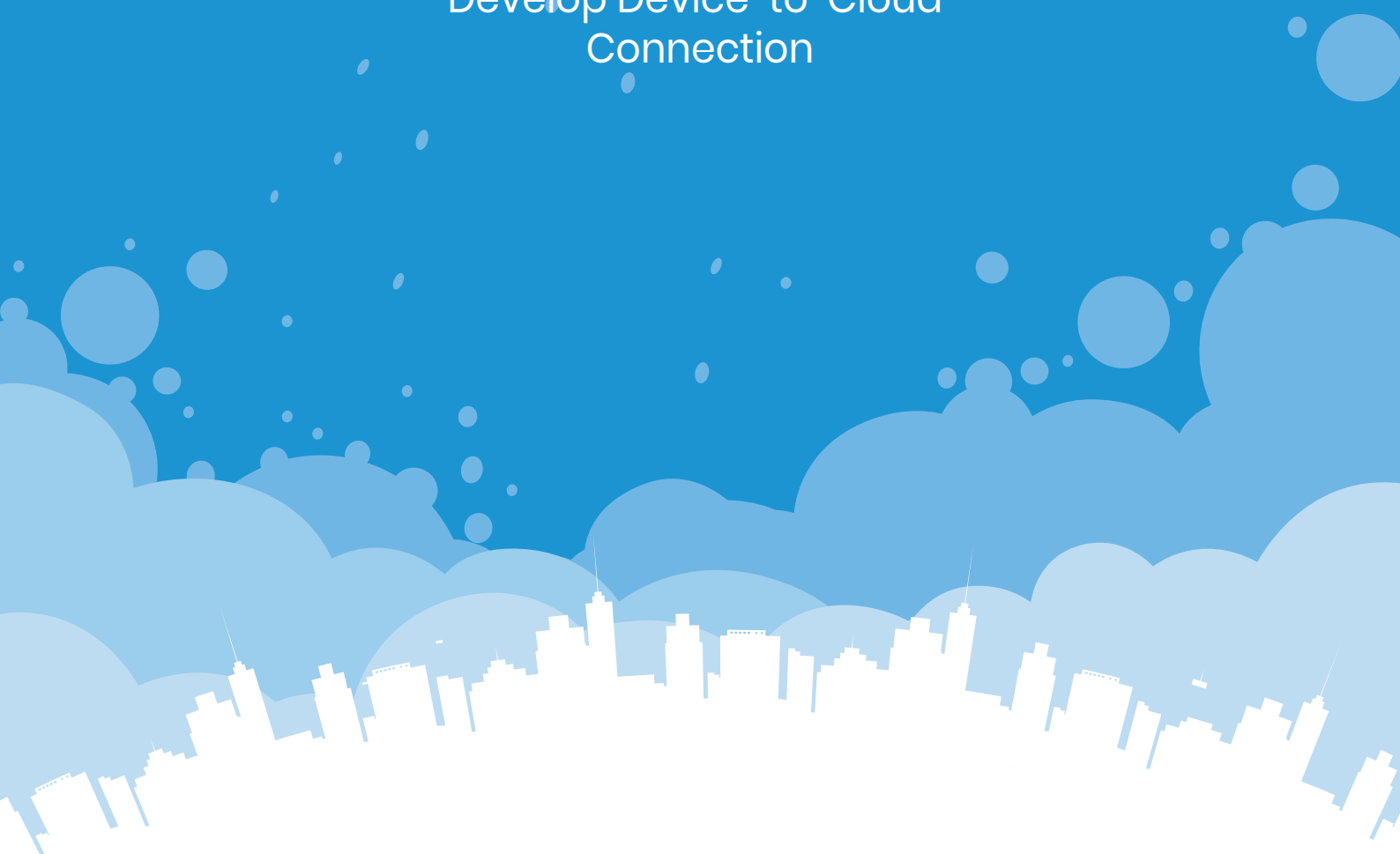


Milesight IoT Cloud

Develop Device-to-Cloud
Connection



Milesight

Jumpstart IoT Solution with Milesight IoT Cloud

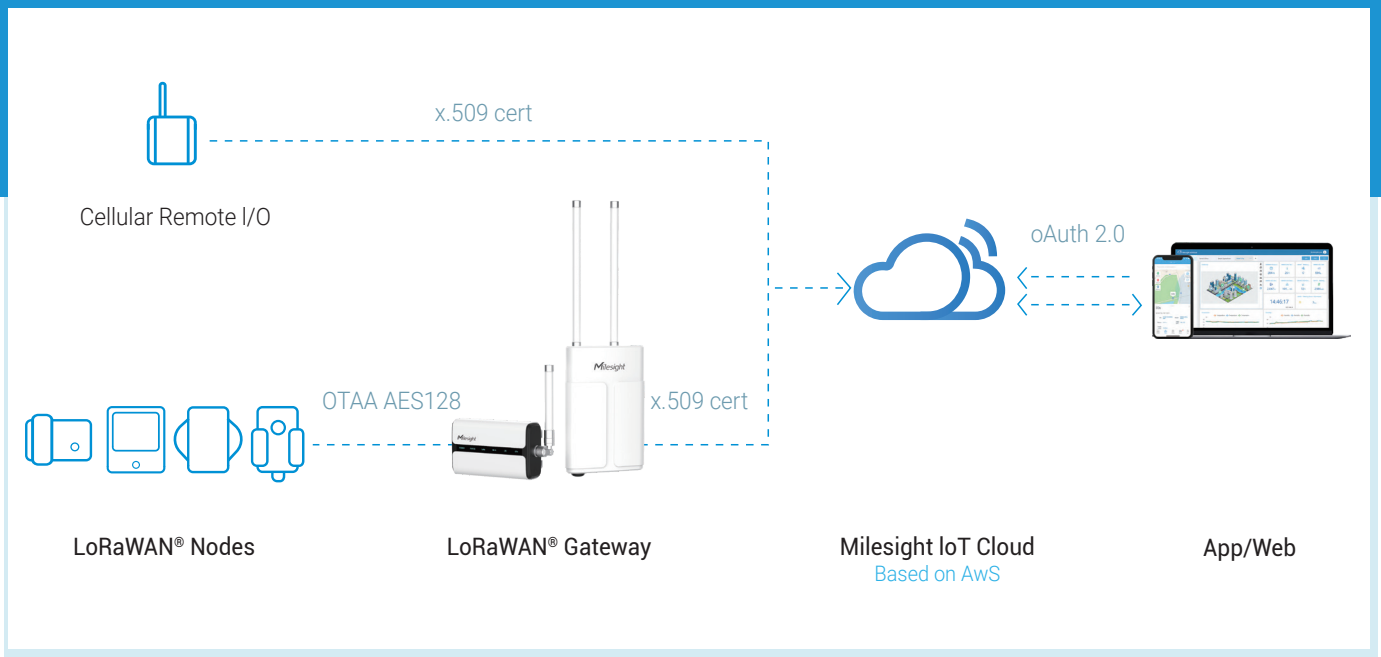


Milesight IoT Cloud provides unparalleled levels of vertical integration with Milesight LoRaWAN® nodes (sensors and controllers). Through field data visualization, it allows users to monitor and control remote assets on an intuitive dashboard. What's more, it enables trigger reception, report, sharing, transferring etc., offering extraordinary flexibility of managing connected devices.

Leveraging the trendsetting tech, Milesight IoT Cloud turns data into actionable insight and provides convenient, stress-free, secure, and comprehensive IoT enablement service, standing at the forefront of the global IoT revolution of today.

Milesight IoT Cloud Security

Milesight IoT Cloud is a comprehensive cloud-based on AWS. It collects data from Milesight end-nodes and provides App and Web GUI for users. Data security and privacy is the highest priority at Milesight and for its users. Therefore, Milesight IoT Cloud offers a range of security mechanism to protect your data.



- **X.509**

X.509 certificates act as secure identifiers, just like digital passports which contain information about the owner. Every device uses a unique certificate that ensures all data from end nodes to Milesight IoT Cloud is well validated and encrypted.

- **HTTPS**

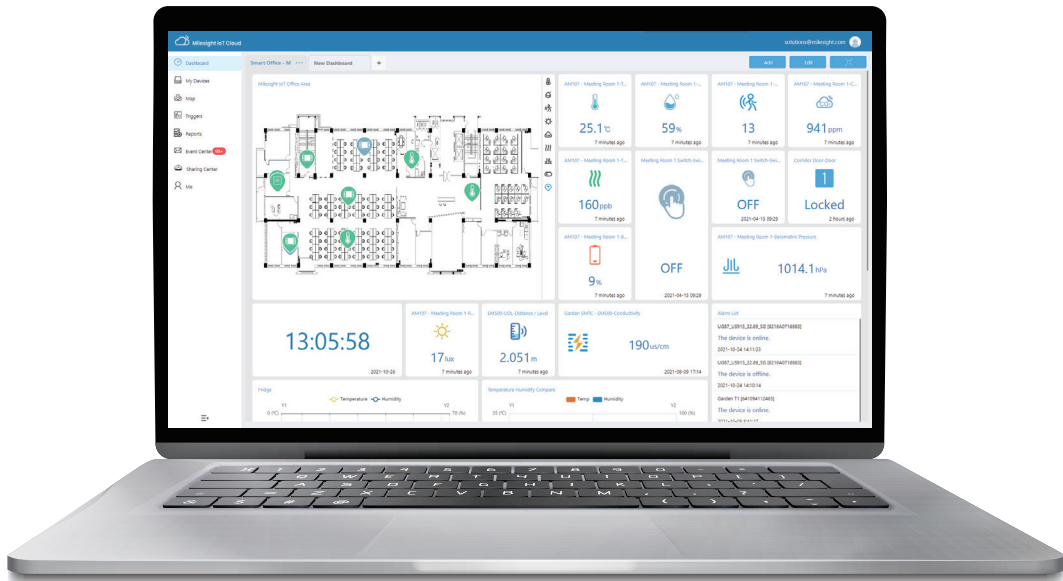
With functionalities of anti-spoofing and data encryption, HTTPS protocol keeps communication securely between user-end and Milesight IoT Cloud.

- **OAuth 2.0**

Milesight IoT Cloud uses OAuth for user authorization. It is an open protocol to allow secure API authorization in a simple and standard method from desktop and web applications.

- **Data Storage**

Data is placed and protected by AWS, the world's leading secure cloud computing service platform.



The Dashboard is a user-friendly interface where admins can monitor and interact with connected devices through graphs, charts and other tools. It allows users to manage every aspect of their connected devices as well as gain insight on the environment through visualization of device data.



Analytics Visualization



Multiple Intuitive Widgets



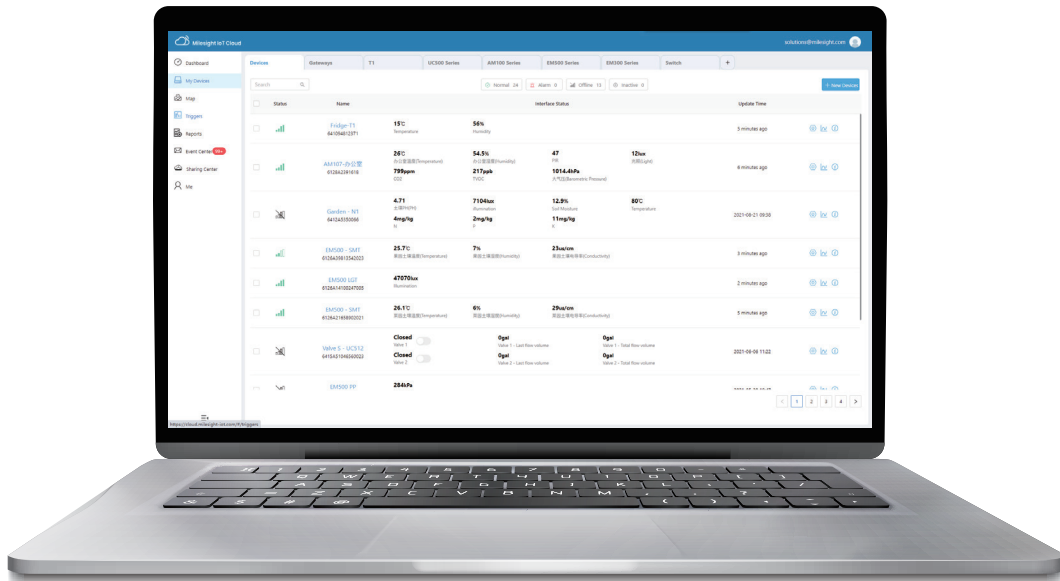
Customized Dashboards



Multiple Dashboard Creation & Sharing

Features

Device Management



Device Management provides users with unprecedented visibility into the status and interface status of all connected end nodes. Being connected to the cloud, their status will be automatically returned to the cloud platform so that users can monitor the operating status in real time to decide whether to take the next step.



Real-time Monitoring
of Devices' Signal Status



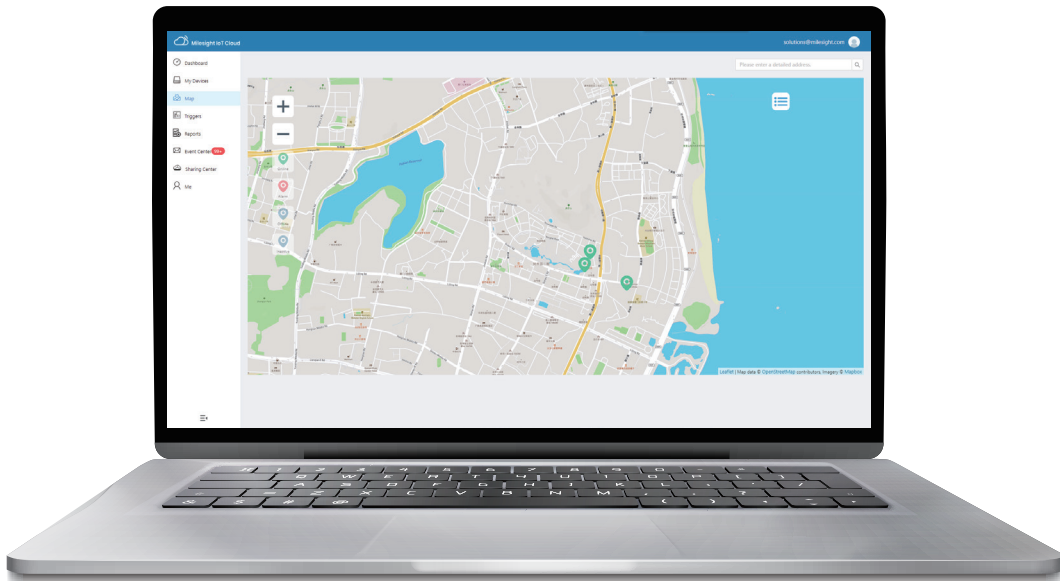
Data Chart
Reference & Download



Threshold
Alarms' Setting

Features

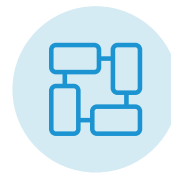
Map



Map furnishes users with paramount perspective on location information of connected devices, including street address, latitude, longitude etc. The location metadata can be updated by users.

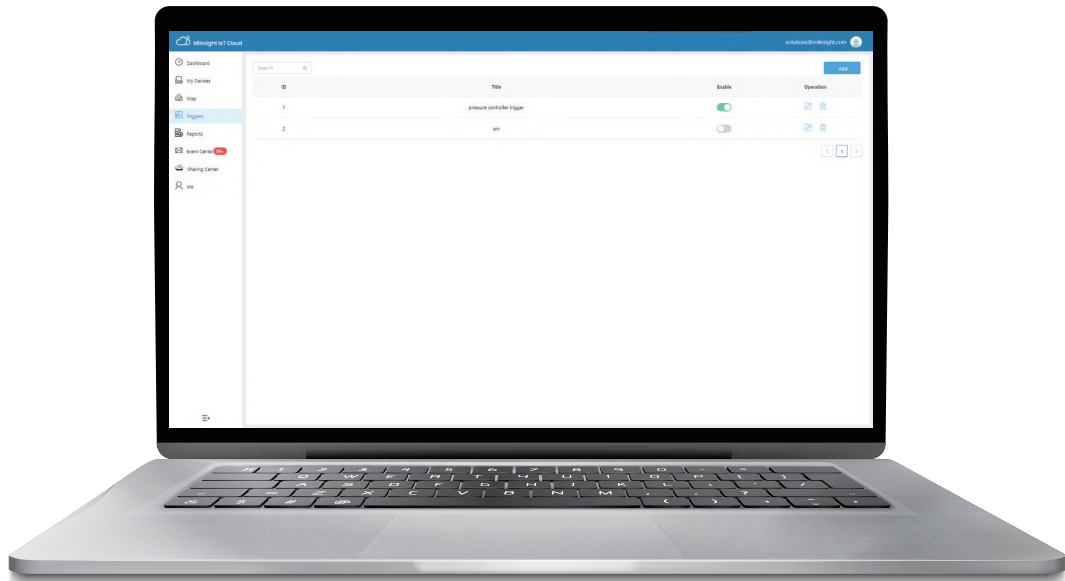


Check Online,
Offline and Alarm Status



Know Any Connected
Device's Deployment Places

Features Triggers



The Trigger interface allows users to customize multiple combinations of conditions and triggers. Based on the processed data, Milesight IoT Cloud provides users with many options of trigger warnings, thus adding preventive monitoring for users.



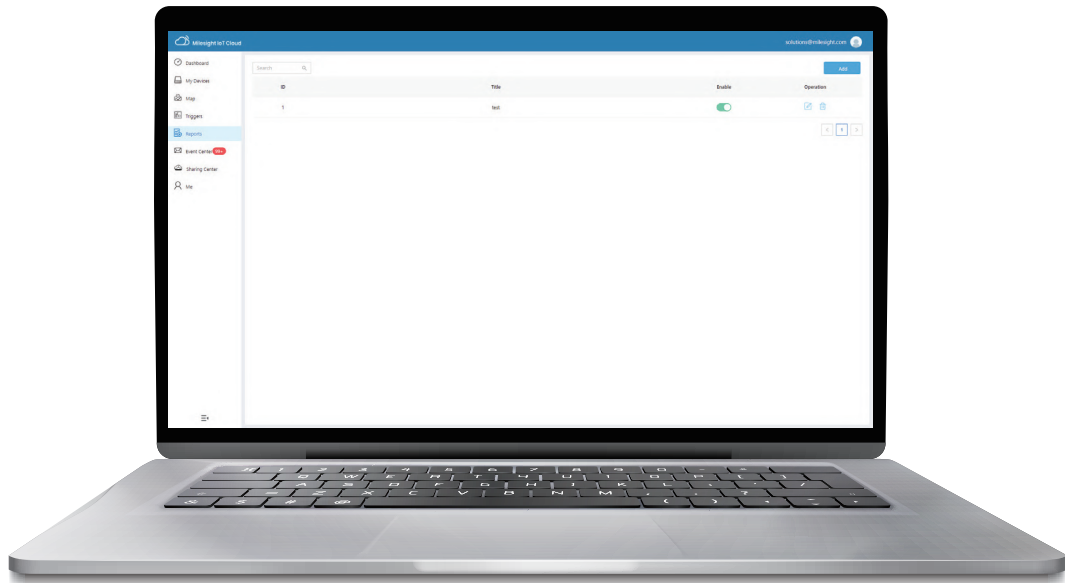
Rich Options for
"Time" or "Value" as Condition



Rich Options for
"Alarm" or "Trigger" as Actions

Features

Reports



Harnessed by Reports, admins are able to check and export daily, weekly or monthly data of the connected devices that they select, and they can send or share these reports to certain people. Reports offer intuitive insight on how do these connected devices perform.

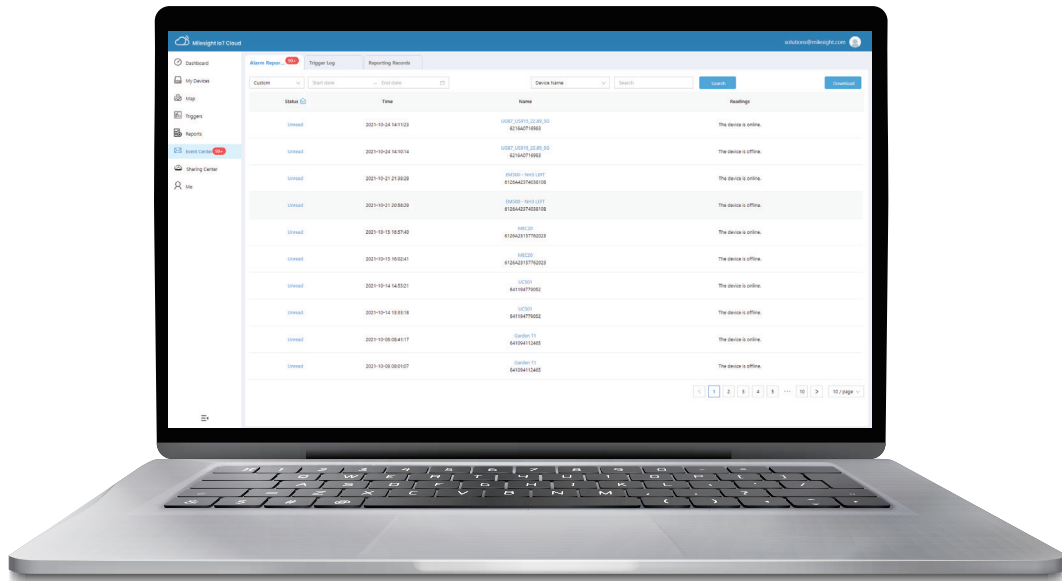


Check and Export Daily/
Weekly/Monthly Report



Share with People
Connected Devices' Performance

Features Event Center



In Event Center, users check and export Alarm Reporting, Trigger Log and Reporting Records of different periods, including today, yesterday, last week etc., providing unprecedented convenience for users to track connected devices' status.

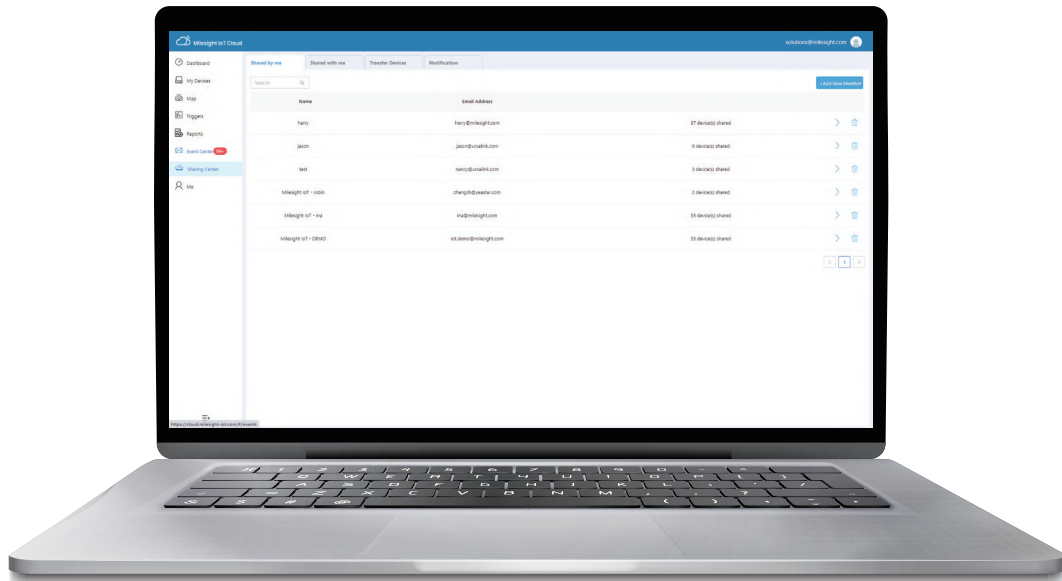


**Gain Real-time Insight
on Connected Devices' Status**



**Know More by Theme Filtering
Like Device Name, Serial Number,
or Command Title**

Features Sharing Center



In Sharing Center, many operations will become easy for users to conduct including adding users for cooperating, tracking all sharing, transferring devices' ownership and receiving notifications. Channels/end users can find how Milesight IoT Cloud works exactly even without an account.



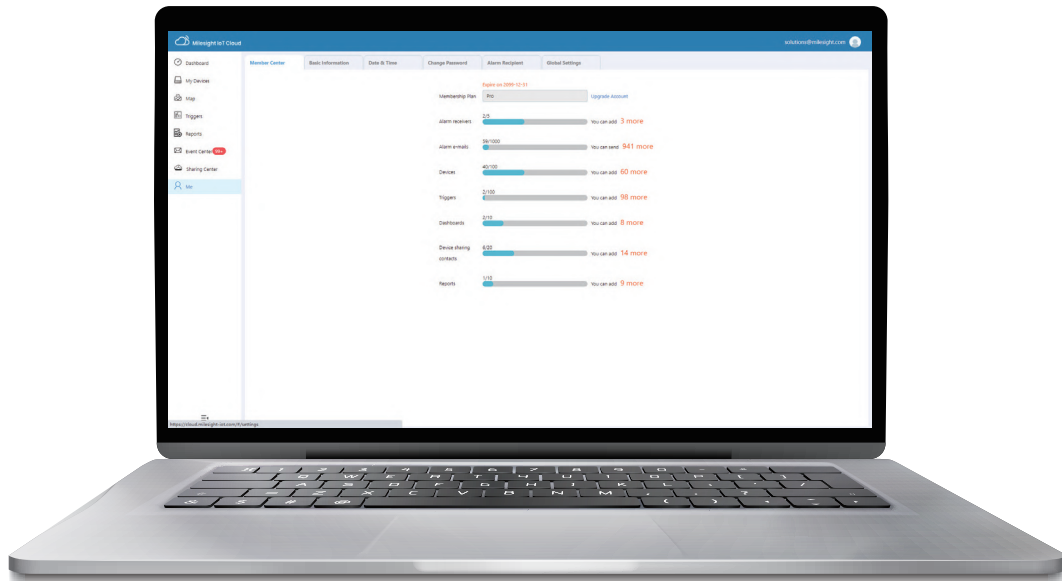
Utmost Flexibility for
Sharing and Transferring



Real-time Notifications

Features

Account Management



Account Management is a place where admins can manage their basic information, setting, passwords etc at a rapid speed. In addition, the remaining number of alarm receivers, alarm e-mails, devices, triggers, and dashboards will be presented clearly and intuitively on this interface.

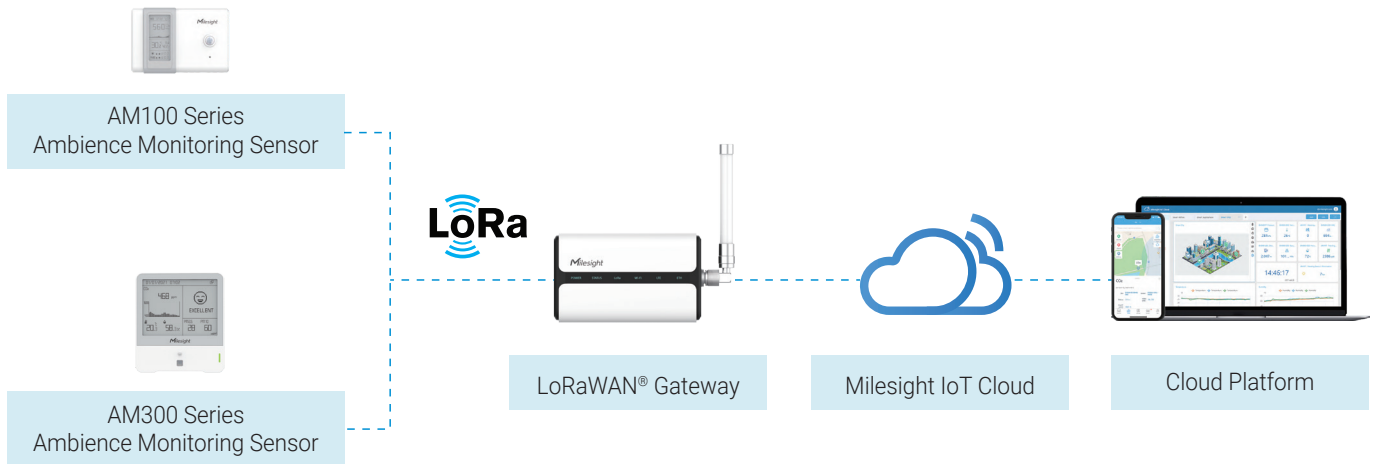


**Better Basic
Information Management**



**Faster Understanding
of Remaining Rights**

Milesight Indoor Air Quality Solution



Milesight launches one-stop solution for indoor air quality (IAQ) to monitor the data of ambience air quality in real time which helps you to live in safer and healthier environment, especially during the COVID-19. With straightforward data directly shown on display and cloud platform, you can always stay informed and alert before it is too late. Through reports and analysis, you can catch the problems that you probably ignore.



iOS



Get the **Free** Trial now and begin your data-driven future.

Xiamen Milesight IoT Co., Ltd. | www.milesight-iot.com



Tel: 86-592-5085280

Support email: iot.support@milesight.com

Sales email: iot.sales@milesight.com

Website: www.milesight-iot.com

Address: Building C09, Software Park Phase III, Xiamen 361024, Fujian, China

