

RBM33G

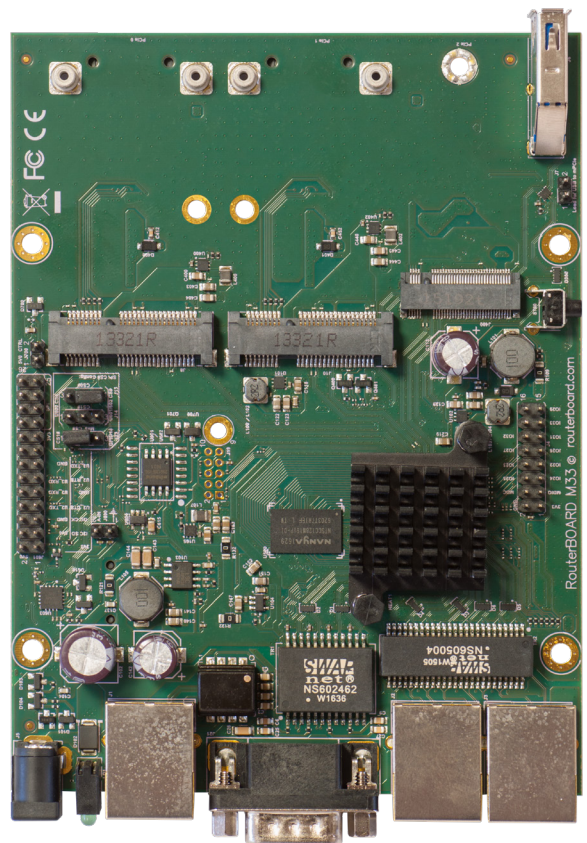
The RBM33G is a fully featured RouterBOARD device perfect for using in your own enclosure or building a custom solution. It uses the same PCB form factor and same mounting holes as it's predecessors (RB433 and RB953 series).

The RBM33G features a new MediaTek two core CPU running at 880 MHz and 256 MB of DDR3 RAM and three Gigabit Ethernet ports. It is specially designed for setups that requires two 3G/LTE modems. You can use the device with e.g.:

- two miniPCIe 3G/LTE modems (two SIM slots provided);
- two miniPCIe wireless cards
- one miniPCIe and one USB 3G/LTE modem leaving other miniPCIe slot for 802.11 wireless card (consult product Quick Guide for details).

The included USB 2.0/3.0 port can be used either for 3G/LTE modem or an external hard drive (consult product Quick Guide for details). For expanding storage, microSD and a PCIe M.2 slots are provided.

The RBM33G comes fitted with a RS232 serial port for console access. The device can be powered by PoE through it's gigabit ethernet connector or through the DC power jack.



Specifications

Product code	RBM33G
CPU	MediaTek MT7621
CPU nominal frequency	880 MHz
CPU core count	2
Size of RAM	256 MB
Storage	Flash, 16 MB
10/100/1000 Ethernet ports	3
MiniPCIe slots	2
PoE in	Yes
SSD	M.2 slot
Serial port	RS232
USB	1 USB 3.0 type A
Supported input voltage	11 V - 28 V (Passive PoE)
Dimensions	105 x 150 mm
Operating temperature	-40°C .. +70°C tested
License level	4
Operating System	RouterOS
Max Power consumption	24 W; 5 W without attachments